

MONTHLY MEMBERSHIP PROGRESS REPORT

District 33 S

Results as of: 4/30/2026

GMT:

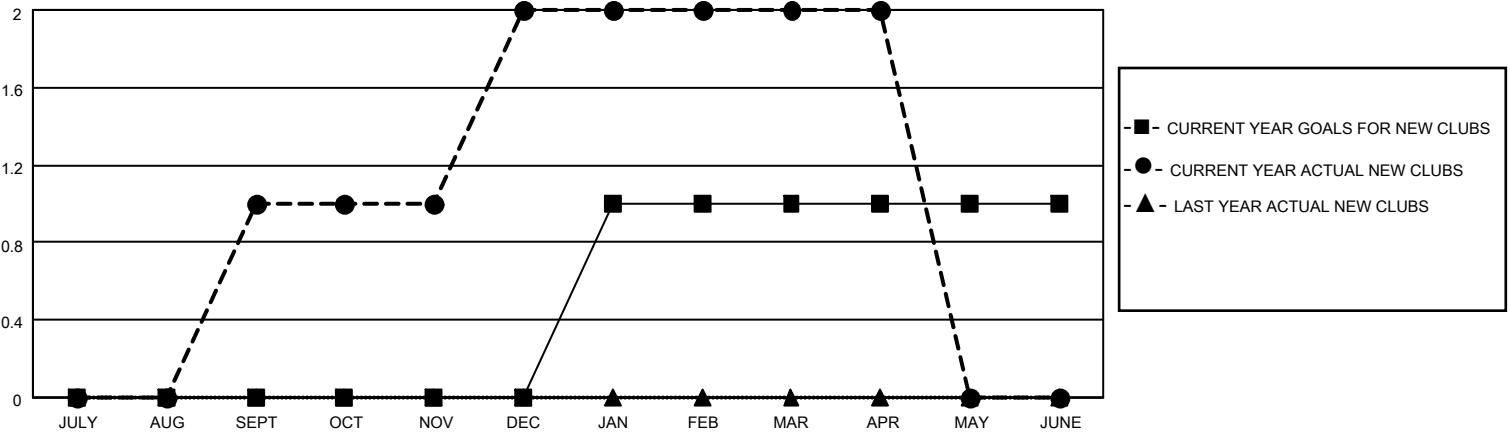
LOCATION MASSACHUSETTS

GMT CA

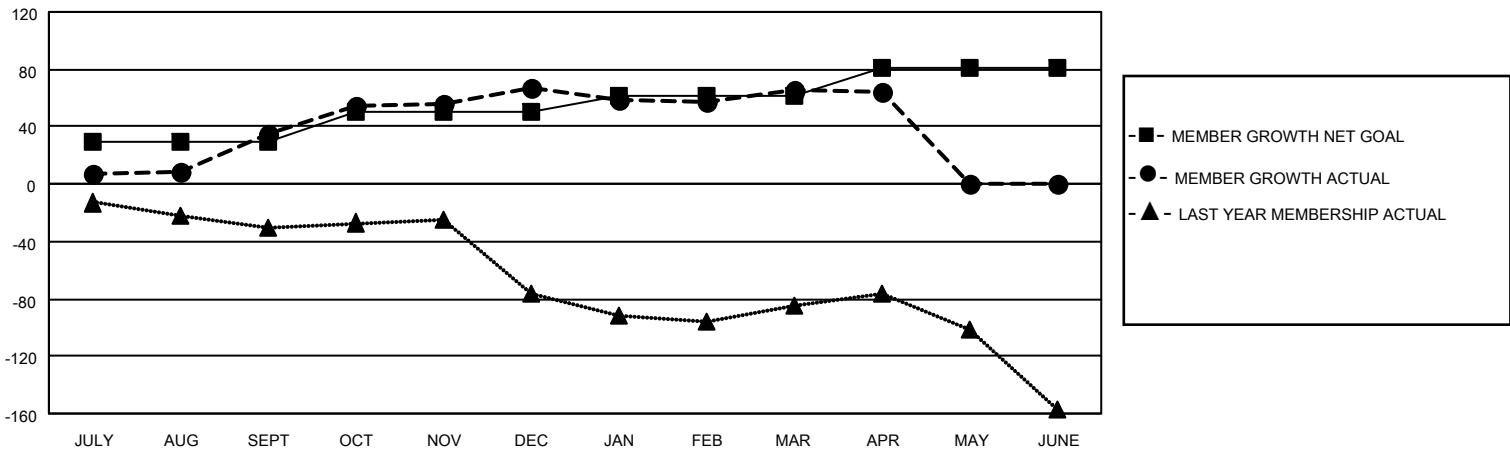
Clubs			
RESULTS FOR 2025-2026			
QUARTER	NEW CLUB GOAL	NEW CLUBS	DROPPED CLUBS
JULY/AUG/SEPT	0	1	0
OCT/NOV/DEC	0	1	0
JAN/FEB/MAR	1	0	0
APR/MAY/JUNE	0	0	0

Members			
RESULTS FOR 2025-2026			
QUARTER	MEMBER GROWTH NET GOAL	MEMBER GROWTH ACTUAL	DROPPED MEMBERS ACTUAL (including transfers)
JULY/AUG/SEPT	30	64	27
OCT/NOV/DEC	20	68	33
JAN/FEB/MAR	11	25	25
APR/MAY/JUNE	20	40	22

GOALS AND ACTUAL NEW CLUBS CUMULATIVE



GOALS AND ACTUAL MEMBERS CUMULATIVE



DROPPED CLUBS: 0	28 CLUBS OF 48 ADDED 1 OR MORE NEW MEMBERS	GENDER DISTRIBUTION MALE 853 (58.27%) FEMALE 610 (41.67%)
DROPPED MEMBERS DECEASED 15 CLUB CANCELLED 0 OTHER 92 TOTAL 107	CLICK HERE FOR CUMULATIVE MEMBERSHIP DATA	TOTAL FAMILY UNIT MEMBERS 231 FAMILY MEMBERS PAYING HALF DUES 117